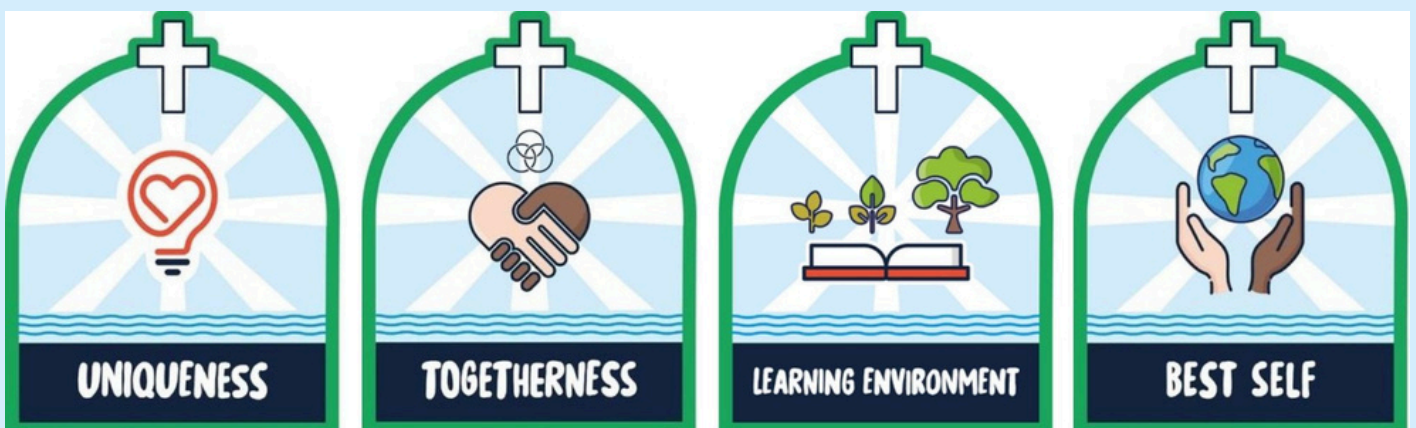


# Understanding Spirituality

Understanding Spirituality at Thurgoland CE Primary School

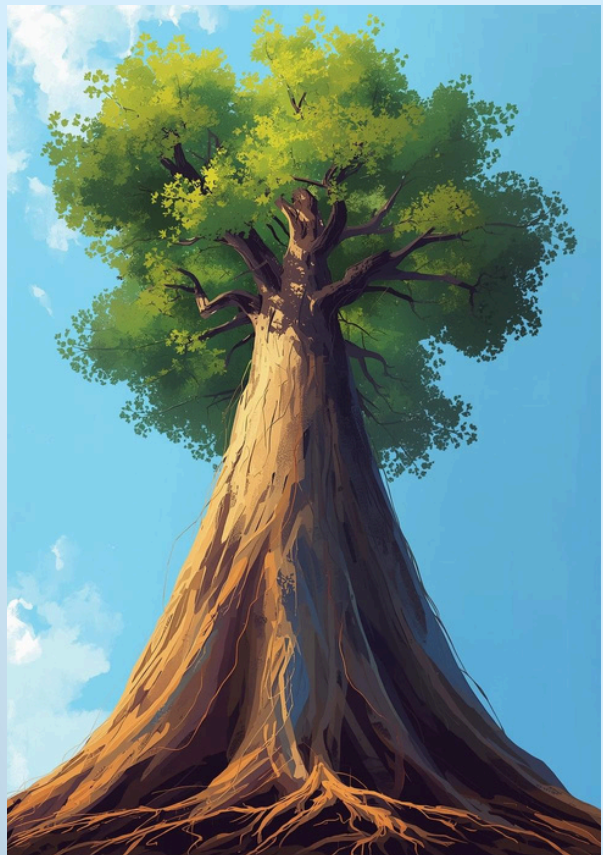


# Spirituality Defined

## Connecting with Something Bigger

Spirituality is about seeking a meaningful connection with something bigger than oneself, which can result in positive emotions, such as peace, awe and wonder.

In Christian language, Jesus describes spirituality like the wind – we cannot see it, but we can feel its impact.



# Spirituality at Thurgoland

Nurturing Growth Through Christian Values



At Thurgoland, spirituality is **central** to our Christian vision. It is inspired by the Parable of the Mustard Seed, illustrating that everyone has the potential to grow. This growth requires time, care, and the right conditions—our role as adults is to cultivate these conditions.

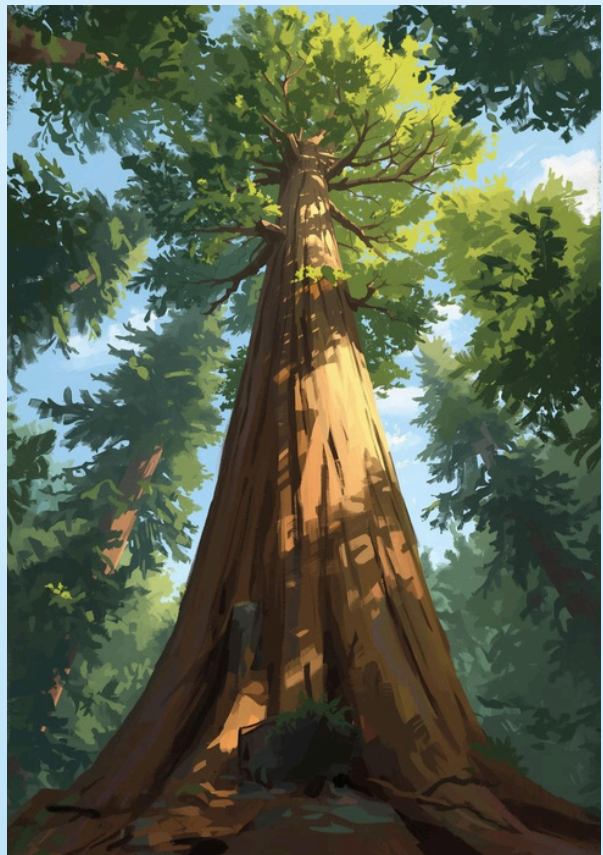
By creating an environment where students can thrive, we empower each individual to become their best self. This reflects our commitment to helping all students contribute positively to the world around them, ensuring they feel valued and supported as they grow spiritually and personally.

# Bringing Spirituality

## How It Shapes Our School Environment

Every adult's presence contributes to the spiritual atmosphere of the school, fostering an environment where students feel valued, respected, and encouraged to explore their own beliefs and connections.

By embodying our Christian values, staff can nurture a supportive and inclusive community, helping students to cultivate their spirituality in meaningful ways as they engage with their peers and learning experiences.





# Promoting Christian Values

Spirituality through Uniqueness and Growth



You bring your spirituality when you promote our **Christian Values**. At Thurgoland CE Primary School, we believe that every child and adult is a unique individual, created by God and deeply valued. Recognising individual voice and identity is essential for growth.

Spirituality flourishes when we encourage children to think for themselves. By valuing questions, reflection, and personal meaning, we create an environment that nurtures each child's spiritual journey and genuine understanding of their beliefs and identity.

# The Learning Environment

Spirituality Integrated Within Education



Our school is a place where **spirituality is woven** through learning, not added on. This integral approach helps foster a nurturing environment where students can thrive academically and spiritually.

Spirituality is nurtured when we **encourage awe, curiosity,** and fascination in learning, support courage as we give it a go, and honor dignity and differences within our community.

# Growing Together

## Strengthening Our Spiritual Community



We believe that spiritual growth happens **together**. Listening with empathy fosters connections, while respecting diverse beliefs enhances understanding. By showing compassion and kindness, we strengthen our community. This unity embodies our belief that “**I am because we are.**”

In our school community, we support one another through shared experiences. **Togetherness** nurtures spirituality, allowing everyone to thrive. As we listen, honor differences, and practice kindness, we create a nurturing environment where personal and collective growth can flourish.

# Our Shared Commitment

Helping Every Child Become Their Best Self

Our shared commitment to nurturing spirituality is essential for creating a supportive environment that encourages growth and development in all individuals within our school community.

By fostering a culture of understanding, empathy, and respect, we empower every child and adult to reach their potential and contribute positively to society.

